

# CERTIFICATE OF LOCATION OF GOVERNMENT CORNER

NORTHEAST Corner of Section 8, Township 106, Range 40, 5TH P.M.

STATE OF MINNESOTA, County of MURRAY

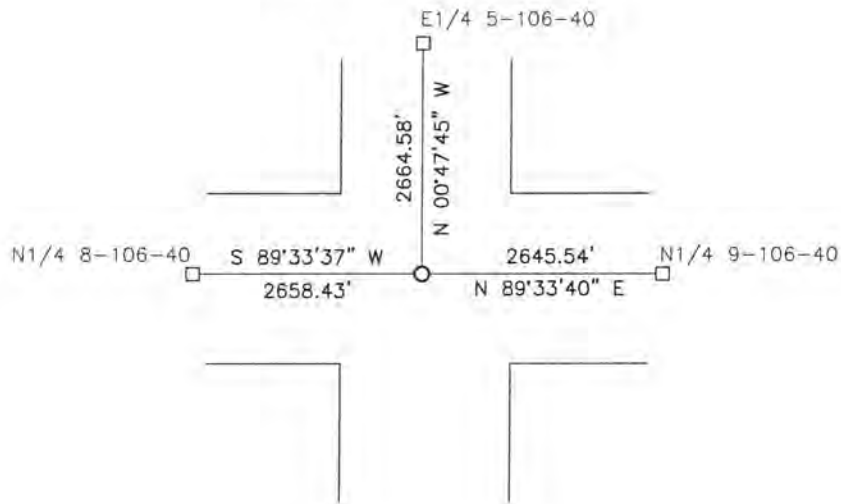
At the corner location shown on the sketch:

On 4/7/15 found a stone

left monument as found,  lowered monument,  removed monument (explain)

On 4/7/15 placed a 5/8" iron with seal #43844 over stone

### SKETCH OF REFERENCE TIES



Minnesota State Plane Coordinate  
System Murray County Datum  
NAD83 (1996)

N: 158148.055  
E: 527271.792

NO TIES

Statement of evidence relative to this corner location is on back of page.

I hereby certify that this document and the data contained herein was prepared by me or under my direct supervision.

[Signature] 3/2/16  
SIGNATURE DATE

Registration No. 43844

- Land Surveyor,  Professional Engineer
- County Surveyor,  County Engineer

OFFICE OF THE COUNTY RECORDER

County of MURRAY

I hereby certify that this document was filed in the Co. Recorders office at 11:00 A. M on the 18<sup>TH</sup> day of OCTOBER A.D. 2016

County Recorder Cuelyn C. Larson

By \_\_\_\_\_, Deputy

DOCUMENT NO. \_\_\_\_\_

## Statement of Evidence

In 1861, D.W. Wellman and S.S. Smoot did the original subdivision of the township.

On October 16, 1901, J.W. Woolstencroft recorded a brown jug and culvert tile with stone in center at the corner.

On April 20, 1969, Murray County Highway Department found a field stone and set a concrete monument and steel pin at the corner.

On December 15, 2009, Murray County Highway Department found an iron at the corner.

On April 7, 2015, Bueltel-Moseng Land Surveying found a bent metal bolt at the corner. We probed and hit a stone under the bolt. We removed the bolt and set a 5/8" iron with seal #43844.